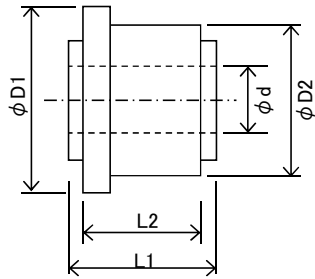


・モールドCOM

(Mold type)



略号/SYMBOL

- ・2T(2枚合ワセ) : 2pieces combined segment bar
- ・T(銅管式) : CUT-type
- ・B(バー式) : CMB-type
- ・Ir(リング入り) : with insert ring
- ・Ag : Ag contained copper bar

COM寸法表

No.1

●モールドCOM (鍛造/銅管) Mold Commutator (from Copper Tube)

T	D1	D2	L1	L2	d	備 考
2	12.6	11.7	8	6.5	6	
5	8.3	8	4.8	4.6	3.1	
6	12	12	13.5	8.5	4	
7	6.8	6.8	5.9	5.9	2.3	
8	14.8	14.8	8.6	7.5	4	
9	15.5	14.4	10.5	8.5	4.9	
12	25.4	20.3	17	15	8	
13	10	8.9	7	5.5	3.2	
	10.4	10.4	7	5	3.6	
	12.6	11.7	8.5	6.4	5	
	12.6	11.7	10	7.5	5	
	16.8	16.5	9	8	7	
14	19.5	11.2	9.8	7.5	3.3	
17	16.7	16.1	8.3	7	6;8	Ag
	16.7	16.7	16	14	8	Ag
21	26.2	24.2	13.2	12	14	
	38.5	28.5	31.5	24.5	14.2	
	39.6	30.5	31	26.5	12	
	42	30.4	38	35	10	
	42	32	28	25	15.5	
	58	40	50	43	15.5	
23	49	36.5	38	36.5	15.5	
	49	49	43	39.5	14	
25	40.5	30.5	27.5	22.5	12.5	
	40.5	30.2	28.4	24.4	12.5	
	45	33	30	27	10;15	
	46.4	33	38	36.5	10.4	Ag
	58	40.5	31	28	16	
27	49.5	36.8	32	27.5	16.6	
	50.7	36.7	33.5	29.5	16.5	
28	49	32.5	31.5	26.5	13	
29	52.5	29.2	27	24	12.5	
	56	34.5	27.3	24.3	15.7	

●モールドCOM (鍛造/銅管) Mold Commutator (from Copper Tube)

T	D1	D2	L1	L2	d	備 考
31	52.5	30.2	29.6	26.6	12.5	
33	43 56	33.4 34.5	26.1 27.3	24.1 24.3	15.7;18 15.7	
37	60.1	60.1	30	24	20	
42	50.8	50.8	26	24	17	