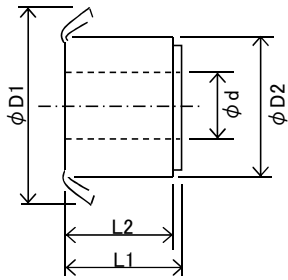


・フックCOM

( Hook type )



略号/SYMBOL

- ・R(銅板丸メ式) : CUR-type
- ・T(銅管式) : CUT-type
- ・B(バー式) : CMB-type
- ・SM(バー式セグメントマイカ使用) : CMB+mica-type
- ・Ir(リング入り) : with insert ring
- ・Ag : Ag contained copper bar
- ・Ag/C : Ag crad material

COM寸法表

No.1

●フックCOM Hook Commutator

T	D1	D2	L1	L2	d	備考
3	9	5.8	11.5	7.5	2.3	R
	11	7.8	16.7	11.5	3.2	R
	15.5	9.3	10	8.5	3	T-Ag
5	9	5.8	11.5	7.5	2.3	R
	11	7.8	16.7	11.5	3.2	R
	24	16	11	10.5	6	R
7	15	12	13.4	11.4	4	T-Ag
	16.5	11.8	16	12.1	4	R
	19	15	14.3	13.5	5	T-Ag
8	14	11.5	11.5	11.5	5	T-Ag
	18	15	10	10	4.5	R
9	9	7.2	5.2	4	3	T
	15	12	7	7	5	T-Ag
10	15.5	9.3	10	8.5	3	T-Ag
	20.4	15.5	13.5	12.5	9	R-Ag
	20.4	16	13.5	12.5	8	T
	20.7	16.2	13.5	9	8	R-Ag
	22	16	13	12.5	8	R-Ag
	24	16.7	16.4	16.4	9	R-Ag
	24.5	19	16	10.7	9	R-Ag
	26	20	16	13.7	10	T
	27	20.3	28.5	23	11	T-Ag
	29	22.2	17	15.5	8	R-Ag
12	22	18.7	13.1	11.5	5;6;7	R-Ag
	23	18.9	11.5	10.5	8	R
	23.1	18.2	13.6	10.8	8	R-Ag
	24	20	11.8	11.2	6	T-Ag
	24	20	14.5	14.5	7	Ag/C
	24	20	15.4	15.4	7	T-Ag
	24	20	16	13.7	10	T
	24	20.2	15.2	14	7.1;8	R
	24	20.2	16	15	7.1	R
	24	20.3	15.5	14.5	8;9	R
	24.5	19	16	13.7	6.9	T-Ag
	25.7	20.2	13	12	7.1	
	26.9	20.2	17.5	12.2	8	R-Ag
	30	23	15.8	14.8	9;10;12	R-Ag
	30	23.4	17.5	16.7	9.9	T
	31	23	17	16.2	10	R-Ag
	31	23.4	17.5	16.8	8	R-Ag
	32	23.5	21.1	21.1	8	T

## ●フックCOM Hook Commutator

T	D1	D2	L1	L2	d	備考
12	33	25.1	19.5	18.5	8;10;12	R-Ag
	33.6	24.3	20.8	20.8	12	T
	36	26.2	26.8	26.8	12	T-Ag
	38	30.3	24	22	10	R
13	15	10.5	8.3	7.8	5	T
	18	14.8	8.5	8.5	7	T
	18	14.8	10	8.5	5;6	R
	18	14.8	11	11	7	T
	18	14.8	12	12	7	T
	19	15.2	14.6	10.9	5	T
	19	15.4	10	10	7.5	T
	20.5	15.3	10.5	10.5	8	R
	23.5	19.3	12	8.5	8	R-Ag
	33	25.1	17.5	16.5	12	R-Ag
	37.6	32.3	11.1	8.5	23.6	R-Ag
14	15	12	13.4	11.4	4	T-Ag
	30.2	23	14.8	13.8	9.9	R-Ag
	30.2	23	15.8	14.8	9.8	R-Ag
	31.6	24.2	18	17	8;10	R-Ag
	31.6	24.2	25.3	24.3	8	T-Ag
	33.6	24.2	20.2	15	10	R-Ag
15	53	28.2	30	28	14.2	R-Ag
16	19	14.4	12	11.5	4.8	SM
	35	28.5	22.5	20.5	12	T
	38.5	32	22	20	14	R-Ag
17	21	16.5	18.5	15.5	8	T
	29.5	25.2	17	14.5	10	T
	38	30	30	19.5	8	T
18	19.4	15	17	11	4	T
	20.7	16.2	14.5	13.5	8	T
19	40	23.6	16	10.7	12	R-Ag
20	28.8	23	17	14	7	T
	39.7	34.3	11.6	9	25.6	R-Ag
21	29.5	25.2	13.5	13.5	12	T
	31	24.2	19.5	18.5	12	T-Ag
	31	24.2	19.5	18.5	12	R-Ag
	38	28.2	28	14.2	14.8	
	38.7	30.3	19.5	13.5	19.9	T-Ag
	38.8	28.5	27.5	21.5	13.7	T
	41	34.5	29		16	

## ●フックCOM Hook Commutator

T	D1	D2	L1	L2	d	備考
21	49	40.2	30	22.5	16.5	T-Ag
	58.5	50.5	25	22	17	T
		24.7	23		14	
22	28.5	23	17.5	15	8	T
	34	28.5	19	17.5	12	
	38.2	30/28.2	23.5	16.2	14	T-Ag
23	24.8	20	27.6	13.5	6	Ag
	27	20.5	20.9	13.3	8	Ag
	49	36.5	43	39.5	14	T
24	23.8	19	14.7	13	4;6	T
	24.2	20.2	14.4	12.7	5	T
	24.2	20.2	16	12.5	8	T
	26	22.2	18	14	9.4	B
	28.6	23.5	18	16	8;11	T
	28.6	23.5	18	16	10	T,B
	31	25.4	19.5	17	10;12	B
	33	28.3	18	17	9.5,10,12	B
25	28.6	23.5	18	16	10	T,B
	30	25.4	19.5	17	10;12	B
	33	28.3	18	17	9.5	
	37.1	32.7	15.5	14	12	
	38	32.7	15.5	14	12	T
	38	32.7	16.2	13.2	20	
28	33	28.3	18	17	12.1	B
32	37.8	33	24	20	12	
	40	35	27	22.5	15	
33	38	32.7	11	10	23	Ag/C
34	33.6	30.2	21	18	11.8	T
37	50	45	17	15	15	T