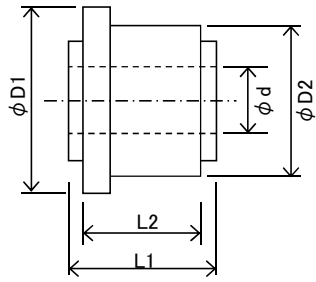


・クランプCOM

(Clamp type)



略号 / SYMBOL
・2T(2枚合ワセ) : 2pieces combined segment bar
・NUT(ネジ締め式) : Nut clammer
・B(バー式) : CMB-type
・SM(バー式セグメントマイカ使用) : CMB+mica-type
・Ag : Ag contained copper bar

COM寸法表

No.1

●カシメCOM (カシメ/ネジ締め) Clamp Commutator

T	D1	D2	L1	L2	d	備考
5	13.7	13.7	9	7	4.8	Ag
10	13.7	13.7	10.1	8.6	4.8	Ag
11	26	25.5	20	15	8	
13	27.5	26	15	11	8	
14	11.8 13.7 14.3 16.5 25 32.3 25.5	11.8 13.2 13.5 15.5 23.5 32.3 22.5	11.9 11.6 11.8 11 16 26 16	8.7 9.5 10.2 8 13 22.5 13	4.7 4.7 5.6 6.5 8 10.3 8	Ag Ag Ag Ag Ag Ag Ag
16	36	31	21	18	12.4	
17	40 45 46 58 75	35.2 40.5 35.3 46.5 47	26 36 26 44.5 64	23 26 23 36 60	11;12;13 12.5 12 12.5 16	
18	11.9 14	11.9 14	8.3 12.7	6.3 9	4 4.9	Ag Ag
19	29.5 36 39 42 56	26.7 30.5 37.5 40.5 53.5	22.2 27 35 20 39	17.5 23 30 16 33	9.4 12 12.3 18 18;20;25	Ag Ag Ag
20	34	30.5	29	25	12	Ag
21	53 70 70	36.7 45 52	33 35 40.5	27 32 32	15.3 17.5 18	2T
22	21 21 22 24	19 20.5 21 24	14 13.5 14 16	11 11 11 13	6.8 7.8 8.2 8	Ag Ag Ag
23	49.6 67 63.5	33.3 43.7 52	30.7 33 53	24.4 30.2 50	12 16 20	Ag

## ●カシメCOM (カシメ/ネジ締め)

T	D1	D2	L1	L2	d	備考
24	21.5	21.5	18	14	10	Ag
	22	18	13.5	11	5	
24	24.4	24.4	19.5	14	10	Ag
	24.4	24.4	21	14	11	Ag
	26	24.4	21	14	11	Ag
	26	25.5	19.5	16	10	Ag
	26	25.5	22	14.5	10	Ag
	27	25.5	15	11	9.5	
	28.5	28.5	22	17	12	Ag
	29.5	29.5	24	17	14	Ag
	45	34		32	14	
25	82	55.4	57	51	23	2T
	93	63	67	63	23	NUT
	101	63	72	65	29	
26	22.5	21	19	16	7	Ag
	35.5	34	20	17	12.5	
27	46.4	34	30.5	28	13.5	
	84	56	51	46	25	
28	30	28.5	20	11	10.5	Ag
	30.5	28	17	13	10	
	32	32	18	16	11	
	32.3	32.3	25.5	19.5	14	Ag
	32.3	32.3	27.5	20.5	14	Ag
	32.5	32.5	20.5	15	10	Ag
	35	33.5	20	17	12.5;14.2	Ag
	35	34	30.4	25	13	
	37	35	26	18	11	
	40	37	33	29	15	
	46	42	34.9	28.4	17	Ag
	55	48	39	36	19	
	29	51	37	38.5	28.5	18
55		37	26.5	22.5	15.5	
69		45	30.5	26.5	15.5	
70		45	31	28.5	18	
78		52	48	43	22	
30	24	24	20.5	14	7.8	Ag
	28.5	28.5	23	17	9	
	31	30.5	26.5	22.5	11.4	
	37	35.5	26	23	14	

## ●カシメCOM (カシメ/ネジ締め)

T	D1	D2	L1	L2	d	備 考
32	30	30	23	20	12	
	32.3	32.3	24	20.5	14	
	33	31	25	21	12	
	34	30.5	27.5	20.5	10	
	35	32	25	21	15	
32	36.5	36.5	26.5	20.5	15	Ag
	36.5	36.5	28.5	25	12.8	Ag
	36.5	36.5	33	23	15	Ag
	36.5	36.5	33	25	15;16	Ag
	38.5	38.5	33	25	12;12.5;15	Ag
	38.5	38.5	38.7	28	12	Ag
	40	35.4	32	26	12.5	Ag
	53 (50)	48	33	30	18	
33	52.4	43.7	33	30.2	16	
	53	36.7	33	27	15.3	
	62	41	28.5	25	19.8	
	63	43.7	33	30.2	16	
	65	45	33	30	18	2T
	94	67	61	56	29	
34	29	28.5	23	18	10	
	32	30.5	18	11.5	10;11;12	
	37	35.5	21	18	12	
	37	35.5	27	21	11;12	
	45	40.5	36.5	26	12.5	Ag
	58	46.5	44.5	36	12.5	Ag
36	28.5	27.5	23	17	9	Ag
	37	34	15	13	12	
	39	36.5	24	20	12;14	Ag
	40	37	( )	24	14	
	40	40	17	13	12	
	60	52	39	35	18	
	63	50.4	36	30	16	
37	65	52	40	37	23	
	68	50.7	42	36	22.8	
	70	52	36	32	22	
	72	51	40	31.5	21.5	
	73	52	40	37	21;23	
	78	52	40	35	22	
	84	70	62	56	29	
	190	150	110	82	45	

## ●カシメCOM (カシメ/ネジ締め)

T	D1	D2	L1	L2	d	備考
38	37.5	37.5	33	28	12	Ag
	40.5	40.5	34.5	28	12	
	49	47	40.5	36.5	19	
	52	49	42	33.5	20	
	52	49.5	30	26	16	
	58	49.5	30	26	16	
39	56	53	28	22	20.8	
40	80	72	52	50	23	
41	58	50.4	43.6	41	17.8	
	58	50.4	48.3	41	17.8	
	58	50.4	44	41	23	
	58.6	50.4	37	31.5	22.8	
	59	41.5	26	23	19.8	
	64	50.4	43.6	41	22.8	
	72	52	46	43	21	
	104	84.5	62	55	29	
	110	85	61.5	57	32	
	130	100	113	99	35	
	138	105	71	57	32	
	145	115	71	57	40	
	42	45	43	25	20	
75		68	40	36	24	
45	37	35	28	25	15	
	63	59	36	30	21.5	
	104	80.5	71	64	32.1	
	104	80	61.5	57	32	
	110	85	61.5	57	32	
	160	131	81	73	39	
48	35	32	25	21	15	
	48	48	23.5	19.5	18	
	48.5	45	24	18	16	
49	31	28.5	18	14	9	Ag
	34	32.1	145	11.5	15.9	
	43	40	15.8	12.8	19.9	
	49	44	27	21	18	
	70	62	45	42	24	
	114	91	62	55	33	
	120	90	82	74	33	

## ●カシメCOM (カシメ/ネジ締め)

T	D1	D2	L1	L2	d	備考
49	123	101	85	74	33	Ag
	129	102	77.7	67.6	34	Ag
	130	101	85	74	39	Ag
	152	115	71	57	40	Ag
50	50.5	49	33	30	19	
	126	91	63	56	45	
51	56	53	28	22	20.8	NUT
	63	59	36	30	21.5	
	127	98	102	91	30	
52	130	100	94	80	39	
53	80	71	38	34	22	
	158	131	103	89	39	
54	42	40	25	21	15.5	
	48.5	47	22	18	16	
	49	47	22	19	16	
	51	44	24	18	18	
	56	52	30	24	18	
	70	65	34	18	20	
56	53	46.6	41.5	36.5	19	Ag
57	53	50.5	24	18	18	Ag
	55	53	30	23	23	
	64	60.5	39	33	18	
	67	62	26	23	20	
	73	71	26	22	23	
	85	70	41	35	22	
	103	80	55	49	28	
	104	80	61.5	57	30	
	114	91	66	55	39	
	128	100	63	57	35	
	130	101	82	74	39	
	150	131	86	72	39	
165	134	97	83	43	NUT	
58	127	101	65	55	45	
60	68.5	61	44	40	23.5	
61	110	85	61.5	57	30	
	129	100	62	56	36	
	130	105	71	57	40	

## ●カシメCOM (カシメ/ネジ締め)

T	D1	D2	L1	L2	d	備考
63	50	44.5	23.5	18	20	Ag
	71	70	57	32	23.5	
	72	70	44	32	24	
	85	68	40	36	24	
	86	71	57	43	23.5	
	114	90	40	30	28	
65	104	80	39.5	35	32	
	104	80	51.5	47	32	
	104	80	61.5	57	32	
	107.5	80.5	71	64	32.1	
		80.5	65	54	32	
69	64	55	42	32.5	18	NUT
	81	75	51	35	28	
	104	80.5	71	64	32.1	
	130	100	88	74	39	
	140	110	62.5	54.5	39	
72	66	60.5	32.5	26	23	
75	65	61	30	24	22	
	78	75	29	22	22	
	98	84	55	40	27	
77	150	131	68	58	39	NUT
80	64	61	27	15	21	
81	87	81	47	39	29	
87	130	115	78	50	45	NUT
90	67	62.5	43	37.5	23	
93	120	110	50	40	40	
105	63	63	42	22	20	Ag
	115	90.4	45	35	32	Ag
125	82	81	50	30	26	